





## Committee Update

*Dear Members*

*We hope you are all well.*

*It has been a quieter month but at least spring and hopefully warmer weather is around the corner.*

*There is no photowalk in April as we work through the bank holidays, but there are two in May including our annual photowalk in Brighton.*

*The season still has loads to look forward to, and with lighter evenings on the horizon we are looking at getting outside more often.*

*As always we appreciate your support and look forward to seeing you all at the club very soon.*

**All the very best**

**LHSCC Committee**



## Chairman's Update

*Hi Everyone*

*Well, we have been relegated from the SCPF PDI Division 4 and you can see how our images did over the season on page 18. Given the standard we are seeing this season I am sure we will make an immediate return.*

*Lots to look forward to in April, and the Lara Jackson talk on the 20th April is a special highlight!*

*Finally we retained the Deltic Trophy on Tuesday 14th April. Well done everyone, it was close and you can see our scores in this newsletter.*

**Take care as always, Ron**

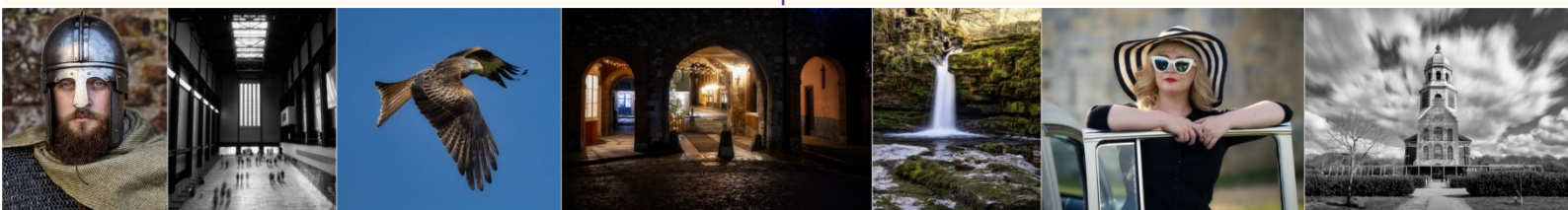
**Chairman**

## Next Month's Competition

**May 2026 Competition titles.**

**Extreme - PDI**

**Open - Print**





**1st Place**  
**Night Workers**  
**James Fox**



**2nd Place**  
**The Night Train**  
**Mark Evans**



**3rd Place**  
**Winchester Cafe**  
**Linda Priestley**



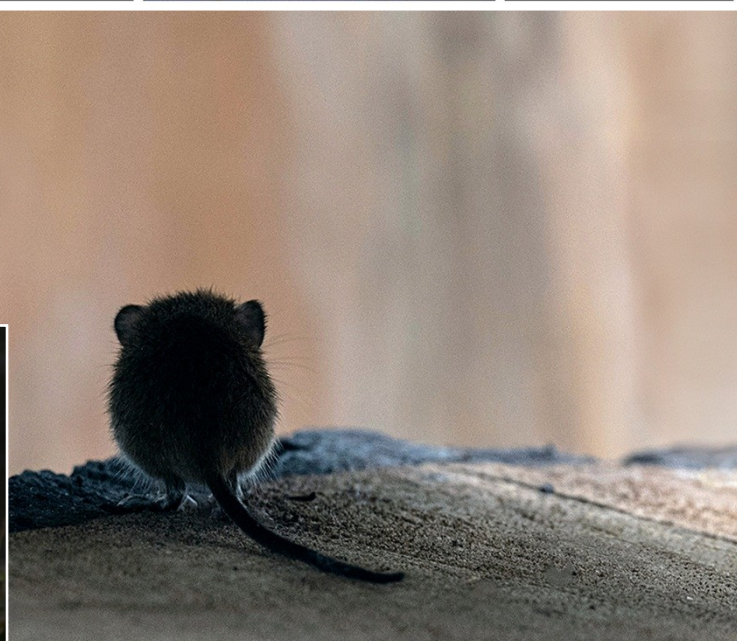
**1st Place**  
**Are You Photographing Me**  
**Nic Drew**

**2nd Place**  
**Beautiful Bee**  
**Linda Priestley**



**2nd Place**  
**Large White Butterfly Feeding**  
**Keith Barnett**

# Best of The Rest



***Best of the Rest***

# Overall League Tables



Combined Totals						
Div	Mem #	Photographer		Total	# of 10's	# of 9.5's
1	672	MARK	EVANS	114.5	8	0
1	644	RON	HARCKHAM	107.5	3	1
1	567	NIC	DREW	105	3	2
1	521	RICHARD	COLE	104.5	2	1
1	481	JAMES	FOX	103	2	1
1	391	MIKE	BUCKLEY	102.5	2	1
1	370	CHRIS	RAYMONT	100	1	1
1	667	TIM	KELLY	54	2	1
1	439	KEITH	BARNETT	52.5	1	1
1	548	ROSS	UNDERWOOD	46	1	1
1	668	SUSAN	BARTON	41	0	0
1	674	DAVID	KIDD	33	0	0
1	626	TERRY	HARRIS	25.5	0	1
2	659	RACHEL	COLLIS	101	1	0
2	669	PAUL	STOVOLD	101	1	0
2	660	DEAN	COLLIS	98	0	0
2	685	GERALD	EDWARDS	93	0	0
2	682	JANET	EDWARDS	90	0	1
2	564	LINDA	PRIESTLEY	89.5	2	2
2	473	DAVID	BLAIKIE	50.5	0	1
2	673	BECKY	WOOLLARD	49	0	0
2	681	SHARON	HINES	40.5	0	1
2	658	GILLIAN	AUSTIN	32	0	0
2	534	ANDREW	POULTER	29.5	0	0
2	648	WERNER	SCHOEFFER	24	0	0
2	700	MIKE	CULLIS	9	0	0
2	661	GARY	ORCHARD	8.5	0	0
3	695	JACQUELINE	RIDOUT	105.5	2	3
3	693	JULIE	COUSENS	105	3	1
3	692	DAVID	MAFFIN	101.5	1	1
3	533	ALLAN	PHILLIPS	65.5	1	0
3	694	PAUL	LARDNER	47	0	0
3	650	JANET	HINDS	46.5	0	0
3	604	NICK	GRIGGS	38.5	0	0
3	690	DAN	SAVICKAS	38.5	0	0
3	422	KEVIN	LEE	38	0	0
3	647	PAUL	MARTIN	33	0	0
3	697	JENNY	HAUSEN	23.5	0	1
3	691	ISABELLE	TWEEDIE	21	0	0
3	601	SIMON	GILGALLON	18.5	0	1
3	562	GUY	MERRY	18	0	1
3	696	LES	HAUSEN	15.5	0	0
3	683	RICHARD	CANDLIN	15	0	0

# PDI League Tables



## PDI Totals

Div	Mem #	Photographer		Total	# of 10's	# of 9.5's
1	672	MARK	EVANS	57.5	4	0
1	521	RICHARD	COLE	54.5	1	1
1	567	NIC	DREW	54	2	1
1	667	TIM	KELLY	54	2	1
1	391	MIKE	BUCKLEY	53.5	2	1
1	644	RON	HARCKHAM	53.5	2	0
1	439	KEITH	BARNETT	52.5	1	1
1	481	JAMES	FOX	51.5	1	1
1	370	CHRIS	RAYMONT	48.5	1	0
1	548	ROSS	UNDERWOOD	46	1	1
1	674	DAVID	KIDD	33	0	0
1	668	SUSAN	BARTON	16.5	0	0
1	626	TERRY	HARRIS	16	0	0
2	564	LINDA	PRIESTLEY	54	1	2
2	473	DAVID	BLAIKIE	50.5	0	1
2	659	RACHEL	COLLIS	49	0	0
2	669	PAUL	STOVOLD	49	0	0
2	682	JANET	EDWARDS	48.5	0	0
2	660	DEAN	COLLIS	47.5	0	0
2	685	GERALD	EDWARDS	46.5	0	0
2	658	GILLIAN	AUSTIN	32	0	0
2	673	BECKY	WOOLLARD	24.5	0	0
2	648	WERNER	SCHOEFFER	24	0	0
2	681	SHARON	HINES	23	0	0
2	534	ANDREW	POULTER	14.5	0	0
2	700	MIKE	CULLIS	9	0	0
2	661	GARY	ORCHARD	8.5	0	0
3	695	JACQUELINE	RIDOUT	56.5	2	2
3	693	JULIE	COUSENS	52	2	0
3	692	DAVID	MAFFIN	50	0	1
3	694	PAUL	LARDNER	47	0	0
3	650	JANET	HINDS	46.5	0	0
3	604	NICK	GRIGGS	38.5	0	0
3	647	PAUL	MARTIN	33	0	0
3	533	ALLAN	PHILLIPS	32.5	0	0
3	422	KEVIN	LEE	30.5	0	0
3	697	JENNY	HAUSEN	23.5	0	1
3	690	DAN	SAVICKAS	22.5	0	0
3	691	ISABELLE	TWEEDIE	21	0	0
3	696	LES	HAUSEN	15.5	0	0
3	683	RICHARD	CANDLIN	15	0	0
3	601	SIMON	GILGALLON	9.5	0	1
3	562	GUY	MERRY	8.5	0	0

# Print League Tables



## Print Totals

Div	Mem #	Photographer		Total	# of 10's	# of 9.5's
1	672	MARK	EVANS	57	4	0
1	644	RON	HARCKHAM	54	1	1
1	481	JAMES	FOX	51.5	1	0
1	370	CHRIS	RAYMONT	51.5	0	1
1	567	NIC	DREW	51	1	1
1	521	RICHARD	COLE	50	1	0
1	391	MIKE	BUCKLEY	49	0	0
1	668	SUSAN	BARTON	24.5	0	0
1	626	TERRY	HARRIS	9.5	0	1
2	659	RACHEL	COLLIS	52	1	0
2	669	PAUL	STOVOLD	52	1	0
2	660	DEAN	COLLIS	50.5	0	0
2	685	GERALD	EDWARDS	46.5	0	0
2	682	JANET	EDWARDS	41.5	0	1
2	564	LINDA	PRIESTLEY	35.5	1	0
2	673	BECKY	WOOLLARD	24.5	0	0
2	681	SHARON	HINES	17.5	0	1
2	534	ANDREW	POULTER	15	0	0
3	693	JULIE	COUSENS	53	1	1
3	692	DAVID	MAFFIN	51.5	1	0
3	695	JACQUELINE	RIDOUT	49	0	1
3	533	ALLAN	PHILLIPS	33	1	0
3	690	DAN	SAVICKAS	16	0	0
3	562	GUY	MERRY	9.5	0	1
3	601	SIMON	GILGALLON	9	0	0
3	422	KEVIN	LEE	7.5	0	0

Wow, the standard of photography continues to get better with each competition and many of the individual leagues are very close. Still lots of opportunity to climb the table and to get that **“ten”** that could make all the difference.

Next month is **Extreme** (PDI) and **Open** (Print)

We look forward to seeing what you can produce next month. **Good luck everyone!**



Date	Event Type	Event Details
Monday 20th April 2026	<b>Zoom Talk</b>	<b>Lara Jackson</b> "A lens for conservation"
Monday 27th April	Practical	"Three Things" Smartphones, Post Production & Image Manipulation
<b>Monday 4th May</b>	<b>Closed</b>	<b>Bank Holiday</b>
<b>Monday 11th May</b>	<b>Competition</b>	<b>Extreme PDI, Open Print</b>
Saturday 16th May	Photowalk	Brighton, see March Newsletter for details
Monday 18th May	Photowalk	A walk by the River (weather dependent)

## The Huxford Trophy

The Huxford trophy is our annual competition; it is not linked to our normal league competition and, as such, there is no scoring. This year the competition is sponsored by London Camera Exchange who are kindly providing a £50 voucher for the winner!

### How does it work?

You can submit one PDI which on the evening will be assessed by a judge. The judge's job, in this instance, is to pick the best six images through assessment, but no scores are given. Once the six best PDI's are selected, these are displayed and the members asked to select their favourite; in other words the members pick the winner.

### How does the scoring work?

Each member selects their first (5 points), second (three points) and third (one point) choice which are then added up on the evening and the winner announced.

### What can I win?

The winner gets the Huxford Trophy to keep for a year and of course associated bragging rights.

### Anything else I should know?

You must attend the event in person to enter and all normal competition rules apply.

To check the latest LHSCC what's on calendar

[Click Here](#)

# Club News - Deltic Competition



On Tuesday 14th April, LHSCC retained the Deltic competition trophy against Gosport and Fareham & Portchester camera clubs by **half a point**. The competition comprises of ten prints and ten PDI's from each club judged independently. Our results are below for PDI and overleaf for Print (note the photos are thumbnails so low quality):



10

9



10

9



9.5

8.5



9

8.5



9

8



To check the latest LHSCC what's on calendar

[Click Here](#)

## Deltic Print Entries



10

8.5



9

8



9

8



9

8



9

8



To check the latest LHSCC what's on calendar

[Click Here](#)

## A Chinese Economic Revolution

As a youngster, I used to marvel at the wartime and post-war photographs my father had taken on Royal Navy and Merchant Navy ships. It sparked my interest in both photography and travel and followed in his footsteps by joining the Merchant Navy as a ship's Radio Officer in 1980.

I purchased a Canon A1 SLR camera and a couple of lenses to record my travels. Unfortunately, all of my camera gear was stolen in South Africa on my second trip! It took some time for the insurance to come through so I had to use an old Agfa 110 cartridge camera for the trip on my next ship which carried cargo between China, Japan and the USA.

## China in 1981

My first visit to China was in early 1981 which was only five years after the end of Chairman Mao's cultural revolution. This period was ruthless and deadly in its purge of many elements of Chinese society. In 1981, China seemed more like North Korea today and was very communist and authoritarian. There were no cars on the roads, few goods in the shops and most people wore the standard green or blue 'worker's uniform'. Political slogans were on every street corner and factory gate.

These photos below have been scanned and sharpened (using Topaz) from the old 110mm prints which were never very sharp even with the best camera.

Although very communist, China in those days was very safe and a hugely interesting place to visit. The people were very interested in us because they had very little exposure to Westerners in those days. They were also very honest – a point demonstrated when a dock worker went to the ship's captain to give him an American 25c coin he had found in the cargo hold!



## China in 2025 (44 years later)

My son now lives in Hong Kong and I try to visit him at least once a year. He travels regularly on business to China. Last October, he took us on a visit to two completely different parts of China – rural Guilin, which is north-west of Hong Kong and then to Shanghai, a city of 25 million people. For those with a good knowledge of movies, think the difference between Avatar and Bladerunner!

In the 44 years since my 1981 visit, China has undergone another ‘cultural revolution’. Gone are the empty roads, steam trains, drab shops and workers all wearing the same outfits; these have been replaced by roads full of Chinese made electric cars, bullet trains, modern fashion shops and a high-tech capitalist type economy with cities that are similar to Tokyo, Hong Kong or Singapore.

The communist slogans of yesteryear have been replaced with Gucci and David Beckham posters! Quiet streets have been replaced by hectic noisy ones with market traders all shouting for passers-by to visit their stalls and shops.

The scenery and historic buildings have however remained and are well maintained and protected. The communist party is still in power but has allowed business to flourish everywhere which has made China the economic power it is today.

## Guilin

Guilin was our first visit and a three-hour train journey via bullet train from Hong Kong. The city is famous for its rivers and limestone peaks. These peaks can be found in a number of places in South Asia and have appeared in several films including James Bond and Avatar. I entered one photo of a river and the mountains near Guilin in the February PDI competition and it did well. The mountains near Guilin are famous across China because they appear on the 20 Yuan banknote so many Chinese tourists try and get their photo taken with the same mountains as a backdrop.

The area offers many walks up and through the mountains. These walks can include bridges between mountains and glass walkways bolted into cliffs - not for the faint hearted! Raft rides on the local rivers are a must and the slow flowing rivers mean they are ideal for photography.

Like the rest of China, Guilin feels incredibly safe; I never got used to seeing photographers putting their bags down on the pavement on one side of the street, wandering off to take photographs and then returning later to pick up their bag!

Guilin comes alive at night and its streets are full of colourful Chinese decorations, lanterns, shops, restaurants and temples. The city is surrounded by several lakes and one of these has been turned into a huge water theatre which uses the limestone mountains as a backdrop. The theatre shows there are truly spectacular.

I’ve included a few images from Guilin below and overleaf – including one of our hotel room that had an amazing panoramic window.





## Shanghai

Shanghai is a 2.5 hour flight from Hong Kong and the final approach to the airport on arrival gives you an idea of the sheer size of the 25 million people mega-city. Many of the tourist hotels are located in the centre of the city near the famous Nanjing Road, a six kilometre stretch of shops, restaurants, hotels and luxury boutiques. The shopping centres are full of high-end western fashion outlets and Chinese made electronics. One of the shopping centres has a full size ship building at the entrance which sells Louis Vuitton fashion goods. The drab workers' outfits of 40 years ago have been replaced by the designer clothes you would find in any major western city as well as ninja, fox and panda outfits for those who want to be noticed! .

Although a huge and chaotic city, the streets are much quieter than its western counterparts because 80% of cars are electric and the thousands of scooters that throng the streets are all battery powered.

The city sits either side of the Huangpu River which flows into the Yangtze River. The old historic part of the city is on the western side and the new skyscraper business district on the eastern side. The old part contains many historic buildings from the times when European powers once controlled areas of Shanghai. In those days, one of the parks on the riverbank was reserved for Europeans and is famous because it had signs that prohibited dogs or Chinese people from entering the park!

Thousands of tourists and locals gather every night to see the lights of the business district. The riverbank is called the Bund and is a great place for a stroll – day or night. Many young Chinese couples go there for modelling or wedding photographs; LHSCC members would feel quite at home there with a camera and nobody minds being photographed! There are also several restaurants which offer a terrific view of the business district.

The old French Quarter which is a 10 minute taxi drive away is well-worth visiting. It has many old French style houses and narrow streets. One building which is very popular is the Wukang Mansion which was where many of China's famous actors lived before the communist revolution. After the revolution, several of its famous residents chose to commit suicide by jumping out of the windows rather than be arrested by the secret police for being too 'bourgeois'. Many Chinese tourists go there today to have their photo taken in front of the building.

A short drive from Shanghai is the small historic village of Tongli, which is also known locally as the 'Venice of the East' because of the numerous canals which dissect the old village. It is very popular with 'soon to be married' couples who have their wedding photos taken there when the weather is good. The young couples seem very happy for tourists to take their photos too and one that I took there did very well in a recent PDI competition.

## Travel in China

Petra and I will certainly go to China again – there is so much to see. British passport holders now no longer need a Visa to travel to China. However, there are a few things that potential travellers should be aware of...

Cash and credit cards are not used very much – Chinese people use Ali Pay and WeChat apps on their smart phones to purchase practically everything. These two apps are widely accepted by shops, restaurants, taxis, hotels etc. Show your phone camera the relevant payment QR code in a taxi or shop, enter the amount, and the payment is taken. Don't take much cash to China!

Food in China is not like anything you would find in a Chinese Restaurant in the UK. If you don't like eating vegetable stew for breakfast then it may be preferable to stay in a western hotel that serves food that would suit a western palate.

Most people in China do not speak English so using a 'google translate' type app on your phone is often the best way to communicate!

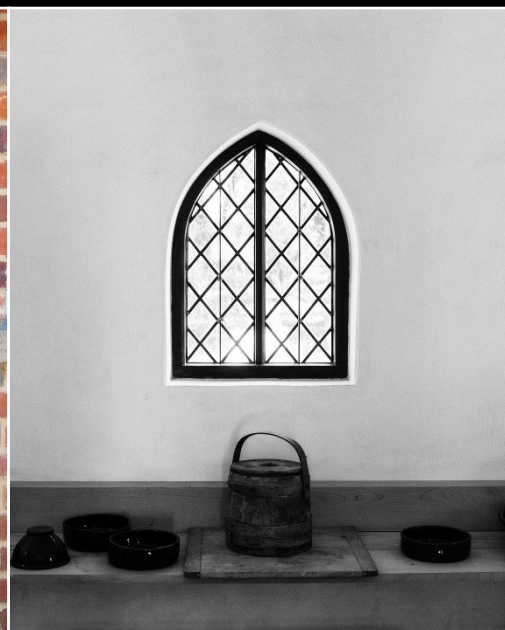
If anyone has any questions on China or is thinking of going there then I'm happy to discuss it with them on a club night.



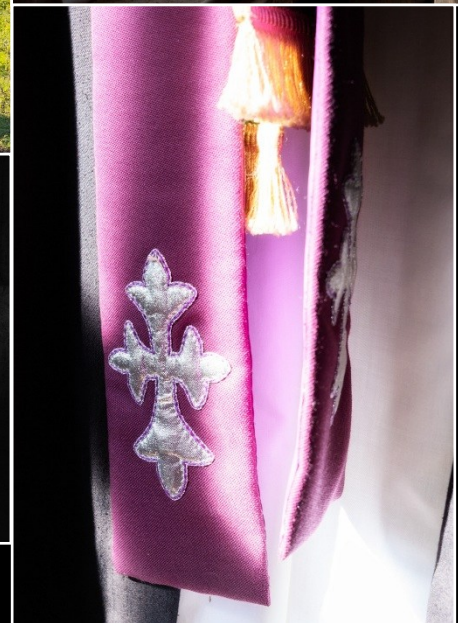
Shanghai 2025



On Saturday 20th March our photowalk took us to the Weald & Downland museum near Chichester. We were blessed with excellent weather and there was such a diverse range of subjects to photograph as you can see from the below:



**Weald & Downland Open  
Museum**





It has been a while since we looked at a 'before and after' edited photo. Ron thought he would explain the below processing from our dance evening. You can see the difference editing makes and in this case there was quite a bit to do!

Reduce black levels to increase contrast and remove background detail.

Draw around the floor using the lasso tool and use 'fill selection' selecting 'content aware'



Draw around the umbrella and stand at the bottom using the lasso tool and choose 'fill selection' selecting 'content aware'

Reduce highlights to remove overall skin brightness

Adjust colour temperature to warm up the image as it looks cold

Crop image



Finally add 'Orton effect' to soften the image and give it a more timeless aesthetics which is both warmer and softer

I have used Photoshop Elements 2025 to crop and remove the unwanted elements of the photo and Luminar Neo for all other adjustments.

However, the 'terminology' used is common across different editing programs.



Our member, Mike Cullis, recently went on a QE2 cruise where he attended three fascinating presentations concerning NASA and space exploration.

After the presentation he was fortunate to meet one of the presenters, James Kennedy, for a private chat.

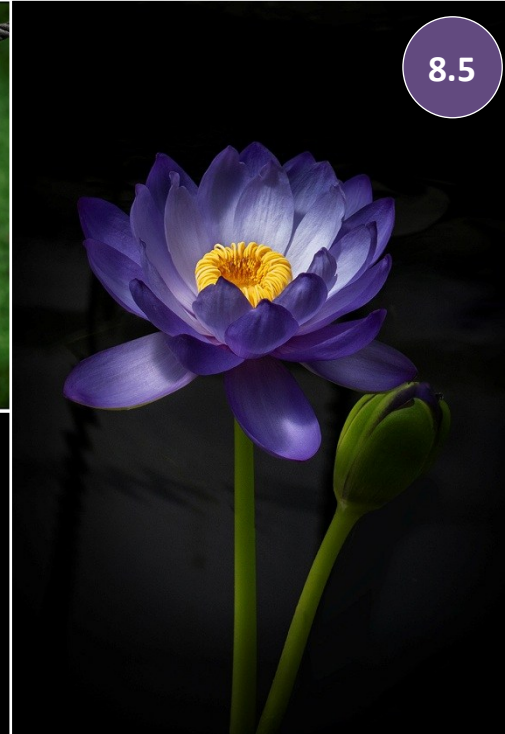
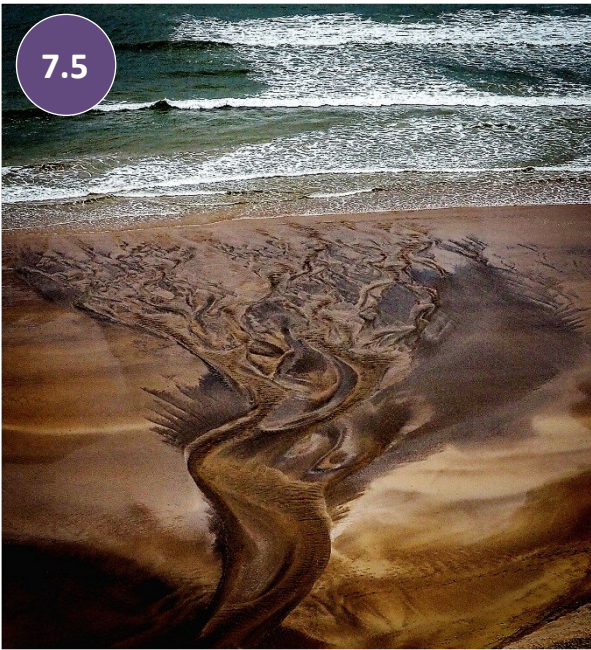
James was the 8th director of the Kennedy Space Centre during the period 2003 up to 2007. He joined NASA as a mechanical engineer in 1980 and worked the shuttle project. He progressed through various senior positions including shuttle Programme Project planning and Management systems in 1987. He had a long and distinguished career with NASA. A fascinating guy to talk to and he is still involved in the current Artimus 2 project.

Have you met someone you would like to tell us about?

# Club News - SCPF Review



Not a great season in the SCPF Division 4, we finished bottom and will be relegated to division 5 next season. So, we thought we would show what our entries scored on average and what type of photos grabbed the judges attention?



Locksheath & Sarisbury Camera Club  
Average Scores - Division 4 PDI League



If last month's talk by Nathan Hill on Astro-photography whetted your appetite then you will find this resource invaluable.

It covers the basics and covers a lot of the information covered by Nathan in his talk.

For more information click [here](#):

**SPACE**.com

Black & White photography has featured heavily in recent club competitions. It never seems to age and should be part of your thought process when taking photos.

For a complete guide to black and white photography click [here](#):



**Amateur  
Photographer**



Many of our members are now looking at entering their work in external competitions which is great!

But, if you want to know the best competitions to enter in 2026, take a look at this list [here](#):

# Upcoming Events



## Beaulieu



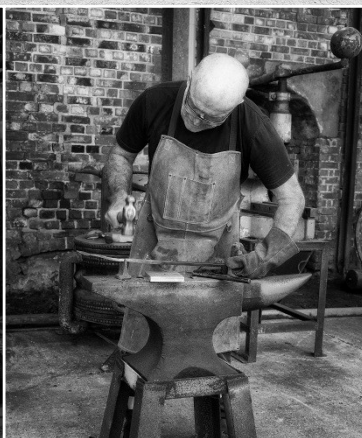
Beaulieu has a Drive-it day in aid of the NSPCC on the 26th April.

All vehicles need to be 2005 or earlier to take part so there should be lots to photograph.

For more details click [here](#):

Greyladies Arts Foundation (GAF) is a small charity based in a historic converted chapel in Old Bursledon.

They regularly host art exhibitions, talks and performances but this will be their first serious specialised photographic exhibition for quite a while so they are keen to spread the word to encourage this amazing medium to a wider audience.



An exciting collection of work by local and invited photographers

**gaf**  
**ANNUAL PHOTO GRAPHIC SHOW 2026**



Konrad Cox  
Andy Blakemore  
Ray Manley  
Mary Foulkes  
George W. George  
Rebecca Danby  
Ali Sainsbury

**25-26 April 2-4 May**  
Open for 2 weekends from 10am - 4pm

On Sunday 26th April the Brickworks Museum has its first steam up event of the year.

It is open from 11am to 4pm on the day and there is generally loads to photograph as you can see from these black and white photographs.

